



Lux Wood
Home Accents



Heirloom Quality
HARDWOOD CHESTS

Steamer Trunks • Cedar Chests • Toy Chests

heirloom quality

Steamer Trunks • Cedar Chests • Toy Chests

Luxwood Home Accents are manufactured in eastern Lancaster County, in the heart of Amish country. Our family owned business started in 1995, and we've continued to expand our line of heirloom quality furniture. We are committed to making furniture that you and your family will enjoy for years to come.

North American Hardwoods offer many rich details in the wood grain. Each production has its own individual grain which carries a beauty that goes deeper than the surface. This beauty is natural; no synthetics, no laminates, no engineered surfaces. Each design is enduring and the quality construction invites you to enjoy using this furniture year after year. When we finish our products, we preserve the distinctive character of the wood. Our solid hardwood furniture is sure to please you today and will be an heirloom to those who follow you.

GALLERY OF STYLES

ECONOMICAL

CLASSIC

SPECIALTY



4 | **Basic Cedar Series**
The Best in Cedar Storage



15 | **Yorktown Series**
Classic Reproduction



14 | **Savannah Series**
Deep Storage



4 | **Franklin Series**
Cedar Flat Top Design



16 | **Mayflower Series**
Classic Panel



13 | **Carriage House Series**
Deep Storage with Drawers



5 | **Charleston Series**
Flat Top Design



15 | **Mission Series**
Mission Style



17 | **Shaker Series**
Simple Panel Design

TABLE OF *Contents*

2	Gallery of Styles	12	Manchester Series	20	Standard Features & Options
4	Basic Cedar Chests	12	Springfield Series	20	Trunk Options & Hardware
4	Franklin Series	13	Carriage House Series	21	Engraving Options
5	Charleston Series	14	Savannah Series	22	Finish Options
6	Harmony Series	15	Yorktown Series	23	Distressing Options
7	Summerfield Series	15	Mission Series	24	Fabric Options
8	Steamer Trunk Series	16	Mayflower Series	25	Care & Warranty
9	Plymouth Trunk Series	17	Shaker 3-Panel	26	Chest Key
10	Tall Trunk Series	18	Shaker 2-Panel		
11	Cambridge Series	19	Toy Chests		

GALLERY OF STYLES

TOY CHESTS

WATERFALL

SEAT RAIL

TRUNKS



19 | Toy Chest
Basic



7 | Summerfield Series
Waterfall Design



12 | Springfield Series
Seat Rail Design



8 | Steamer Trunk Series
Rounded Top



19 | Engraved
Toy Chest



6 | Harmony Series
Oak & Cherry Waterfall



12 | Manchester Series
Seat Rail with Faux Front



9 | Plymouth Trunk Series
Flat Top



19 | Painted Maple
Toy Chest



6 | Harmony Series
Maple Waterfall



11 | Cambridge Series
Seat Rail Design



10 | Tall Plymouth Series
Tall Flat Top

Basic Cedar

SERIES

The Basic Cedar design offers you the best in cedar storage. Using solid aromatic cedar with a clear finish, your chest will be unique with beautiful color variations. Solid cedar chests are unfinished inside.

SHOWN BELOW:

Medium Basic, Cedar (#30-11)

36" L x 17½" W x 18½" H



Mini Basic, Cedar (#10-11)

24" L x 13 ½" W x 14½" H



**QUICK
SHIP**

Medium Basic, Cedar (#30-11)

36" L x 17½" W x 18½" H



Small Basic, Cedar (#20-11)

30" L x 15½" W x 16½" H



Large Basic, Cedar (#40-11)

42" L x 18½" W x 19½" H

Franklin

SERIES

Featuring a flat top design, the Franklin Series uses a solid aromatic cedar with beautiful color variations and finished with a clear finish. It comes standard with a lock. Solid cedar chests are unfinished inside.



Small Franklin, Cedar (#33-11)

36" L x 17½" W x 17½" H



Medium Franklin, Cedar (#44-11)

42" L x 18½" W x 19" H



Large Franklin, Cedar (#55-11)

46" L x 20" W x 21½" H

For more details on our Quick Ship program, see page 27.

Charleston

SERIES

The Charleston Series features a flat top design with lots of storage space. This series comes standard with a cedar bottom, lock and spring lid support. Available in Oak, Cherry and Maple.



SHOWN RIGHT:

Large Charleston, Cherry (#55-33)

Shown in OCS 111 Boston Stain with optional dovetail joints.

46" L x 20" W x 20½" H



Medium Charleston, Cherry (#44-33)

Shown in OCS 228 Rich Tobacco.

42" L x 18½" W x 19" H



Medium Charleston, Oak (#44-22)

Shown in Smoke.

42" L x 18½" W x 19" H



Large Charleston, Oak (#55-22)

Shown in Tavern Stain with optional dovetail joints.

46" L x 20" W x 20½" H

Harmony

SERIES



This classic design features a rounded top and scalloped foot. The Harmony is available in Oak, Cherry & Maple. All of the chests in this series come standard with cedar bottom, lock and spring lid support.

SHOWN LEFT:

Large Harmony, Cherry (#77-33)

Shown in OCS 106 Acres.

46" L x 20" W x 21½" H



Small Harmony, Cherry (#37-33)

Shown in OCS 229 Bing Cherry

36" L x 17½" W x 18" H



Small Harmony, Oak (#37-22)

Shown in OCS 101 S-2 Stain.

36" L x 17½" W x 18" H



Medium Harmony, Maple (#72-44)

Shown in Painted White.

42" L x 18½" W x 19½" H



Medium Harmony, Cherry (#72-33)

Shown in OCS 106 Acres Cherry with optional oval rose design.

42" L x 18½" W x 19½" H



Large Harmony, Cherry (#77-33)

Shown in OCS 229 Bing Cherry with optional Bless Our Home, Grapes design.

46" L x 20" W x 21½" H



Large Harmony, Oak (#77-22)

Shown in OCS 104 Seely Stain.

46" L x 20" W x 21½" H



Jumbo Harmony, Cherry (#97-33)
Shown in OCS 106 Acres Cherry.
46" L x 24½" W x 25½" H



Jumbo Harmony, Oak (#97-22)
Shown in OCS 116 Harvest.
46" L x 24½" W x 25½" H

Summerfield SERIES

This classic design features a gently rounded top and scalloped foot. Only available in Cedar. All of the chests in this series come standard with a lock. Available in four sizes. Solid cedar chests are unfinished inside.



SHOWN RIGHT:
Large Summerfield, Cedar (#77-11) **QUICK SHIP**
46" L x 20" W x 21½" H



Small Summerfield, Cedar (#37-11)
Shown with optional dovetail joints.
36" L x 17½" W x 18" H



Medium Summerfield, Cedar (#72-11)
42" L x 18½" W x 19½" H



Jumbo Summerfield, Cedar (#97-11)
46" L x 24½" W x 25½" H

For more details on our Quick Ship program, see page 27.

STEAMER *Trunk* SERIES

With an air of nostalgia and an antique touch we are sure this trunk will be a family treasure for generations to come. This trunk features a rounded top, genuine leather handles, lock and cedar sliding tray. Available in Oak, Maple and Hickory. See page 20 for hardware choices.



SHOWN LEFT:

QUICK SHIP

Steamer Trunk, Maple (#100-44)
Shown in OCS 226 Coffee with Antique Brass Hardware.
36" L x 20" W x 18" H



Steamer Trunk, Oak (#100-22)
Shown in OCS 116 Harvest with Antique Brass hardware.
36" L x 20" W x 18" H



Steamer Trunk, Maple (#100-44)
Shown in Antique Slate with Polished Nickel hardware.
36" L x 20" W x 18" H



Steamer Trunk, Maple (#100-44)
Shown in OCS 104 Seely with *Old World Distressing and Bronze hardware.
36" L x 20" W x 18" H



Steamer Trunk, Maple (#100-44)
Shown in *Old World White Parchment with Bronze hardware.
36" L x 20" W x 18" H



Steamer Trunk, Hickory (#100-88)
Shown in Natural Finish and Bronze hardware.
36" L x 20" W x 18" H



QUICK SHIP Steamer Trunk, Oak (#100-22)
Shown in Driftwood with Bronze hardware.
36" L x 20" W x 18" H

Trunks are available in any of our paint colors! See pages 19 and 23 for paint color choices. | *This finish incurs an upcharge. For more details on our Quick Ship program, see page 27.

PLYMOUTH *Trunk*
SERIES

The Plymouth Trunk series is very similar to the Steamer Series. This one boasts a flat top, genuine leather handles, lock and cedar sliding tray. Available in Oak, Maple & Hickory. Also available in a taller size!

See page 20 for hardware choices.



SHOWN RIGHT:

Plymouth Trunk, Oak (#200-22)

*Shown in Antique Slate with *Old World Distressing and Bronze hardware.*

36" L x 20" W x 18" H



Plymouth Trunk, Oak (#200-22)

*Shown in Tavern and *Old World Distressing with Bronze hardware.*

36" L x 20" W x 18" H



Plymouth Trunk, Oak (#200-22)

Shown in Painted Black with Antique Brass hardware.

36" L x 20" W x 18" H



Plymouth Trunk, Maple (#200-44)

*Shown in *Legacy Black finish with Antique Brass hardware.*

36" L x 20" W x 18" H



Plymouth Trunk, Maple (#200-44)

Shown in OCS 228 Rich Tobacco with Polished Nickel hardware.

36" L x 20" W x 18" H



Plymouth Trunk, Maple (#200-44)

Shown in Mission Maple with Bronze hardware.

36" L x 20" W x 18" H



Plymouth Trunk, Rustic Hickory (#200-88)

*Shown in Rustic Hickory with *Old World Distressing and Bronze hardware.*

36" L x 20" W x 18" H

Trunks are available in any of our paint colors! See pages 19 and 23 for paint color choices. | *This finish incurs an upcharge.

Tall Trunk

SERIES



Our Steamer and Plymouth Trunks are also available in a taller size. These beautiful trunks can also be used as a coffee table or accent piece in a room. These trunks come standard with a cedar slide tray. Available in Oak, Maple & Hickory. See page 20 for hardware choices.

SHOWN LEFT:

Tall Plymouth Trunk, Maple (#224-44)
Shown in Coffee and Antique Brass hardware.
 36" L x 20" W x 24" H



Tall Plymouth Trunk, Oak (#224-22)
*Shown with *Old World White and Bronze hardware.*
 36" L x 20" W x 24" H



Tall Plymouth Trunk, Maple (#224-44)
*Shown in *Old World White Parchment with Bronze hardware.*
 36" L x 20" W x 24" H



Tall Plymouth Trunk, Maple (#224-44)
*Shown with *Old World Distressing, Coffee Stain and Antique Brass hardware.*
 36" L x 20" W x 24" H



Tall Plymouth Trunk, Rustic Hickory (#224-88)
Shown in Husk Stain and Bronze hardware.
 36" L x 20" W x 24" H



Tall Steamer Trunk, Maple (#124-44)
Shown in Coffee and Antique Brass Hardware.
 36" L x 20" W x 24" H



Tall Steamer Trunk, Oak (#124-22)
Shown in Dark Knight and Bronze hardware.
 36" L x 20" W x 24" H

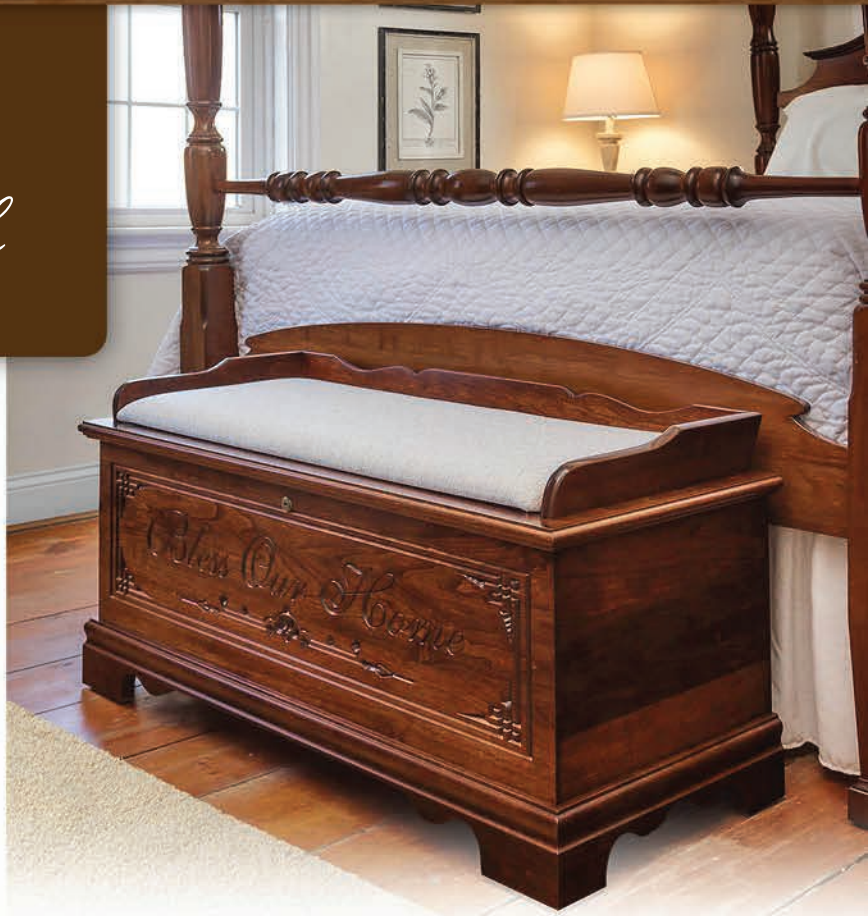
Trunks are available in any of our paint colors! See pages 19 and 23 for paint color choices. | **This finish incurs an upcharge.*

Cambridge

SERIES

The Cambridge Series features a seat rail and an optional padded top making it a comfortable seat. (See page 24 for more fabric options.) It comes standard with cedar bottom, lock and spring lid support. Available in Oak & Cherry. Available in two sizes.

SHOWN RIGHT:
Medium Cambridge, Cherry (#4407-33)
 Shown in Boston with optional Bless Our Home Engraving with #76 Domino Cushion.
 42" L x 18½" W x 22" H



Medium Cambridge, Oak (#4407-22)
 Shown in OCS 112 Provincial Oak with #50 Sage Seat cushion.
 42" L x 18½" W x 22" H



Medium Cambridge, Cherry (#4407-33)
 Shown in Boston with optional Bless Our Home engraving and #78 Granite cushion.
 42" L x 18½" W x 22" H



Large Cambridge, Oak (#5507-22)
 Shown in Golden Oak with #54 Burgundy cushion.
 46" L x 20" W x 24½" H



Large Cambridge, Cherry (#5507-33)
 Shown in OCS Acres with #76 Domino cushion.
 46" L x 20" W x 24½" H

Manchester

SERIES

The Manchester Series is perfect for the end of a bed or even as a window seat. This series features an optional padded seat and simulated door and drawer fronts. Comes standard with cedar bottom, lock and spring lid support (not available on cedar). Available in Cedar, Oak and Cherry.

SHOWN LEFT:

Manchester, Cherry (#56-33)

Shown in Acres and #76 Domino cushion.

46" L x 20" W x 24½" H



Manchester, Cedar (#56-11)

Shown with #78 Granite cushion.

46" L x 20" W x 24½" H



Manchester, Oak (#56-22)

Shown with Harvest with #64 Mocha cushion.

46" L x 20" W x 24½" H

Springfield

SERIES

With a similar design to the Manchester, this series is only available in Cedar. It is perfect for that seat at the end of a bed or by a window. It is available with an optional padded seat and comes standard with a lock. Solid cedar chests are unfinished inside.

Medium Springfield, Cedar (#4407-11)

Shown with optional Psalm 46:10 Design and #76 Domino cushion.

42" L x 18½" W x 22" H



Large Springfield, Cedar (#5507-11)

Shown with #70 Emboss-Linen cushion.

46" L x 20" W x 24½" H



Carriage House

SERIES

The Carriage House is an excellent storage solution featuring added height and a shorter length. Two dovetailed drawers are an additional valued feature. This series is available with a shaker base or elegant tulip feet. Comes standard with cedar bottom, lock, spring lid support and dovetail joints. Available in Oak, Cherry, Maple, Tiger Maple & Qtr. Sawn White Oak.



SHOWN RIGHT:

Carriage House, Cherry (#702-33)

Shown in Autumn Wheat.
36½" L x 17¾" W x 23½" H



Carriage House, Oak (#702-22)

Shown in Harvest Oak with Shaker Base.
36½" L x 17¾" W x 23½" H



Carriage House, Maple (#701-44)

Shown in Black Rubthrough with OCS 106 Acres Cherry and Tulip Feet.
36½" L x 17¾" W x 23½" H



Carriage House, Cherry (#702-33)

Shown in "Old World Distressing Harvest with Shaker base.
36½" L x 17¾" W x 23½" H



Carriage House, Maple (#701-44)

Shown in Pearl with Glaze Finish, optional Jeremiah 29:11 Engraving and Tulip Feet.
36½" L x 17¾" W x 23½" H

Savannah

SERIES



The Savannah Series is very similar to the Carriage House with the exception of the drawers. It is an excellent storage solution featuring added height and a shorter length. This series is available with a shaker base or elegant tulip feet. Comes standard with cedar bottom, lock, spring lid support and dovetail joints. Available in Oak, Cherry, Maple, Tiger Maple & Qtr. Sawn White Oak.

SHOWN LEFT:

Savannah, Maple (#601-44)

Shown in Painted Pearl White with optional Ps. 62:5 Design and Tulip Feet.

36½" L x 17¾" W x 23½" H



Savannah, Oak (#601-22)

Shown in Natural Oak with Tulip Feet.

36½" L x 17¾" W x 23½" H



Savannah, Cherry (#602-33)

Shown in Salem Cherry with Shaker base.

36½" L x 17¾" W x 23½" H



Savannah, Maple (#602-44)

Shown in Black Rubthrough with optional Tiger Maple top stained in OCS 113 Michaels Cherry. Shown with Shaker base.

36½" L x 17¾" W x 23½" H



Savannah, Maple (#602-44)

Shown in Painted Pearl White with Nantucket Glaze, optional Love Never Fails design and Shaker base.

36½" L x 17¾" W x 23½" H



Savannah, Qtr Sawn White Oak (#602-55)

Shown in OCS 113 Michaels Cherry and Shaker base.

36½" L x 17¾" W x 23½" H



Savannah, Tiger Maple (#602-66)

Shown in OCS 113 Michaels Cherry stain and Shaker base.

36½" L x 17¾" W x 23½" H

Yorktown

SERIES

The Yorktown Series is a beautiful traditional style chest. It features an ogee bracket foot and beautiful moulding. Available in Oak and Cherry and comes standard with cedar bottom, lock and spring lid support. Available in two sizes.

SHOWN RIGHT:

Large Yorktown, Cherry (#5500-33)

Shown in OCS 116 Harvest Cherry with optional dovetail joints.
46½" L x 20½" W x 21" H



Medium Yorktown, Oak (#4400-22)

Shown in OCS 101-S2 Stain.
42½" L x 19" W x 19" H



Medium Yorktown, Cherry (#4400-33)

Shown in OCS 106 Acres Cherry.
42½" L x 19" W x 19" H



Large Yorktown, Oak (#5500-22)

Shown in OCS 104 Seely.
46½" L x 20½" W x 21" H

Mission

SERIES

The Mission Series features mission slats on all four sides. These chests can also be used as a coffee table. Comes standard with a cedar bottom. Available in Oak and Qtr Sawn White Oak.



Mission, Oak (#3718-22)

Shown in OCS 116 Harvest Oak.
42½" L x 19¼" W x 19" H

Mission, Qtr Sawn White Oak (#3718-55)

Shown in OCS 113 Michaels Cherry.
42½" L x 19¼" W x 19" H



Mayflower SERIES

The Mayflower Series is a classic panel series built using raised panel construction on the front and sides. This series features ogee bracket foot and moulding. Comes standard with cedar bottom, lock and spring lid support. Available in Oak and Cherry. Available in two sizes.

SHOWN LEFT :

Medium Mayflower, Cherry (#423-33)

Shown in OCS 229 Bing Cherry.

42½" L x 19" W x 21½" H



**Medium Mayflower,
Oak (#423-22)**

Shown in OCS 116 Harvest.

42½" L x 19" W x 21½" H



**Medium Mayflower,
Cherry (#423-33)**

Shown in OCS 229

Bing Cherry.

42½" L x 19" W x 21½" H



**Large Mayflower,
Oak (#523-22)**

*Shown in OCS 112
Provincial Oak.*

46½" L x 20½" W x 22½" H



**Large Mayflower,
Cherry (#523-33)**

*Shown in OCS 106
Acres Cherry.*

46½" L x 20½" W x 22½" H

Shaker Series

THREE PANELS

Shaker Furniture is a style that dates back hundreds of years and is known for its simplicity and quality. The Shaker series carries those qualities with its raised panel construction on all four sides. This chest works great as a coffee table as well. Comes standard with a cedar bottom. Available in Oak, Cherry and Maple.

SHOWN RIGHT:

Three Panel Shaker, Maple (#4219-44)

Shown in Asbury.

42½" L x 19¼" W x 19" H

**QUICK
SHIP**



Three Panel Shaker, Maple (#4219-44)

Painted with Black Rubthrough and top stained in OCS 106 Acres.

42½" L x 19¼" W x 19" H



Three Panel Shaker, Maple (#4219-44)

Shown in Antique Slate.

42½" L x 19¼" W x 19" H



Three Panel Shaker, Oak (#4219-22)

Shown in Driftwood.

42½" L x 19¼" W x 19" H



Three Panel Shaker, Cherry (#4219-33)

Shown in OCS 113 Michaels Cherry and "Old World Distressing."

42½" L x 19¼" W x 19" H



Three Panel Shaker, Oak (#4219-22)

Shown in OCS 116 Harvest.

42½" L x 19¼" W x 19" H

Shaker Series

TWO PANELS

Shaker Furniture is a style that dates back hundreds of years and is known for its simplicity and quality. The Shaker series carries those qualities with its raised panel construction on all four sides with raised panels even on the back. This chest can also be used as a coffee table. Comes standard with a cedar bottom. Available in Oak, Cherry and Maple.



SHOWN LEFT:

Two Panel Shaker, Maple (#3316-44)

Shown in Driftwood.

33" L x 16½" W x 18" H



Two Panel Shaker, Maple (#3316-44)

Shown in Driftwood.

33" L x 16½" W x 18" H



Two Panel Shaker, Cherry (#3316-33)

Shown in OCS 106 Acres Cherry.

33" L x 16½" W x 18" H

Two Panel Shaker, Oak (#3316-22)

Shown in OCS 228 Rich Tobacco.

33" L x 16½" W x 18" H



Two Panel Shaker, Maple (#3316-44)

Painted with Black Rubthrough and top stained in OCS 106 Acres.

33" L x 16½" W x 18" H



Toy Chests

Our Toy Chests are made of quality construction to endure generations of use. It features pinch free front panels that won't pinch little fingers. Our toy chests have counterbalanced lids supports which prevent accidental fall of the chest lid, approved by the Consumer Product Safety Commission.

SHOWN BELOW: Toy Chest, Maple (#411-44)
 Shown with "Toys" engraved on the front. Shown in OCS 104 Seely.
 36½" L x 17¾" W x 17¾" H



Plain Toy Chest, Oak (#424-22)
 Shown in OCS 112 Provincial Oak with Plain Front.
 42½" L x 18¾" W x 18¾" H



Toy Chest, Oak (#411-22)
 Shown in OCS 226 Coffee with "Toys" engraved on the front.
 36½" L x 17¾" W x 17¾" H



Engraved Toy Chest, Oak (#421-22)
 Shown in OCS 116 Harvest.
 42½" L x 18¾" W x 18¾" H

Plain Toy Chest, Oak (#410-22)
 Available with a plain front (no engraving).
 36½" L x 17¾" W x 17¾" H

Painted TOY CHESTS



Painted Toy Chest, Maple (#411-44)
 36½" L x 17¾" W x 17¾" H



STANDARD & OPTIONAL FEATURES

STANDARD FEATURES



CEDAR BOTTOM

Chests are standard with a cedar bottom.



HINGES

Oak and Cherry Chests are standard with the spring loaded lid support.



HINGES

Solid Cedar Chests come with a lid support that allows it to open at 90° while providing support.

OPTIONAL FEATURES

See pages 26 and 27 to see which chests these options are available on.



CEDAR SLIDING TRAY

A 3" deep cedar sliding tray is available for all chests. Rails allow the tray to slide from side to side or be removed.



CEDAR LINING

Cedar protects your woolen, fur, or linen treasures from damage by moths.



CASTERS

Casters provides an easy way to maneuver the chests to select places in your room.



DOVETAILS

This historical detail adds value and beauty to your chest.

STANDARD TRUNKS FEATURES & HARDWARE



HANDLES & HARDWARE

Genuine leather handles give our trunks the finished, authentic touch and serve for excellent function.



INTERIOR

All trunks have an interior tray made of solid aromatic cedar. The cross-beams inside of the trunk lid add strength and an interesting structural feature.



TRUNK HARDWARE

Hardware available in #1 Polished Nickel, #2 Polished Brass, #3 Antique Brass and #4 Bronze.

ENGRAVING OPTIONS

Add one of these engravings to your chest to make it even more special. Choose from one of these 17 designs or a custom engraving to add to the front of your chest.



#D1 Bless Our Home - Grape Design



#D2 Oval Roses



#D3 Love Never Fails



#D4 Wheatland



#D5 Oval Grapes



#D6 Bless Our Home



#D7 Dutch Bird



#D8 Laugh Often



#D9 Personalized w/ Hearts & Roses



#D11 Cascade



#D12 Folklore



#D13 Country Hearts



Psalm 46:10



Jeremiah 29:11



Psalm 62:5



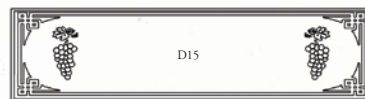
Psalm 121:8



Jeremiah 31:3

CREATE A FAMILY HEIRLOOM

1. Choose your design
2. Specify your wording (up to three lines)
3. Choose your font style.



BLOCK LETTERS

Script 01

Script 02



PERSONALIZE IT

#D-14 1 3/4" x 4" Flexi plate with brass finish engraved with the message of your choice. Mounts inside of lid unless otherwise specified.

5 Lines with 22 Characters per line maximum.

FINISH OPTIONS

Note: Our finishing touches to our products preserve the distinctive character of the wood. Because our furniture is individually handmade, it may slightly vary in color due to variations in wood color. Stain and paint colors shown on products in this catalog may vary due to the catalog printing process. Similarly, we reserve the right to make minor changes and improvements other than what is shown or described in this catalog.

MAPLE STAINS



OCS 104 Seely OCS 116 Harvest OCS 225 Mission Maple OCS 113 Michaels OCS 226 Coffee OCS 227 Rich Cherry OCS 228 Rich Tobacco Dark Knight Antique Slate

CHERRY STAINS



OCS 116 Harvest OCS 106 Acres Cherry OCS 229 Bing Cherry OCS 104 Seely Nutmeg Tavern OCS 228 Rich Tobacco Dark Knight Smoke

RED OAK STAINS



OCS 101 S2 Honey OCS 104 Seely OCS 112 Provincial OCS 116 Harvest Tavern OCS 226 Coffee OCS 228 Rich Tobacco

RED OAK STAINS



Driftwood Dark Knight

QTR. SAWN WHITE OAK



OCS 113 Michaels Asbury Driftwood

FINISH OPTIONS

* THIS FINISH WILL INCUR AN ADDITIONAL UPCHARGE

PAINT COLORS



Pearl White

Antique White

*Pearl White w/ Van Dyke Glaze

Chelsea Grey

*Black Rubthrough

SEE PAGE 21 FOR ADDITIONAL PAINT COLORS.

WE CAN FINISH IN ANY OF THE OCS & PREMIER COLLECTION COLORS.

HICKORY STAINS

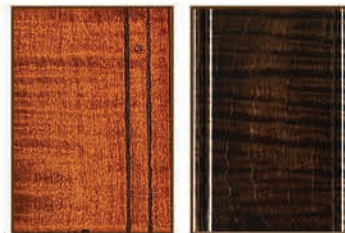


Natural

Natural Rustic

Glazed Rustic

TIGER MAPLE



OCS 113 Michaels

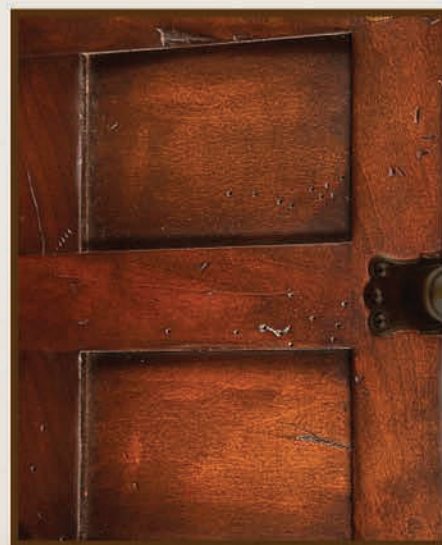
Asbury

DISTRESSING OPTIONS



LEGACY BLACK

This finish is painted with a Harvest stain undercoat. The edges get a rubthrough finish and the chest is finished off with a 20 sheen finish.



OLD WORLD DISTRESSING

Distressing techniques are randomly applied to the face of your furniture throughout the design to simulate the look of age and wear. It may include rounded and worn corners and edges, rasping, dips, knife cuts simulating cracks, worm holes, chain distressing and shading. Glaze will be applied to further highlight the distressed area. It comes with a flat sheen to complete the old look.

FABRIC OPTIONS

Available on the Manchester, Springfield and Cambridge Series.
 Large Size - 41 3/8"; Medium Size - 15 1/2" x 38"



#48 Spa



#50 Sage



#56 Prussian



#5 Jewel Green



#54 Burgundy



#35 Green



#62 Ferrara
Sunset



#64 Flatline
Mocha



#66 Molly
Onyx



#74 Molly Vintage



#68 Emboss
Espresso



#70 Emboss
Linen



#72 Vault
Truffle



#76 Domino



#80 Pearl



#78 Granite

CARE INSTRUCTIONS

Conversion Varnish is the most commonly used finish used in the high-end furniture market. When properly applied and cared for, the beauty of your furniture's finish will be enjoyed for many generations. Conversion Varnish has excellent resistance to foods, beverages and common household chemicals. However to maintain the beautiful appearance of your furniture, a few care guidelines must be followed.

- Excessive waxing can cause moisture from a beverage can or glass to leave a milky white ring on the surface.
- Do not use cleaners containing bleach.
- Avoid cleaners with abrasives, they may scratch the finish.
- Do not allow cleaners containing ammonia to come in contact with your furniture's finish. Ammonia may turn oak black and painted pieces yellow.
- Dyes and inks may discolor the finish. The ink and dyes from newsprint and plastic bags may penetrate into the finish when moist.
- Conversion Varnish offers a very hard mar resistant surface, but like any finish, it may still be scratched or damaged if not cared for properly.

It should be noted that your new Conversion Varnish finish does not achieve its maximum performance properties for at least 30 days from the time it was finished. This is based on maintaining a temperature of at least 70 degrees.

CLEANING GUIDELINES

Generally a soft damp cloth followed by a dry cloth will be all you need to clean the finish. If a cleaner is required, use only a very mild soap and wipe dry. A high quality furniture polish may be used occasionally. Apply polish with a soft cloth following manufacturer's instructions.

Follow these steps and you will be assured that your finished piece will continue to look good for many years to come.

CLEANING: Fingerprints, cooking residues, tobacco smoke, etc. will accumulate on any finished surface. They will not damage the finish, but should be removed occasionally to restore the finish to its original state. Wipe the finish with a damp cloth using a non-wax polish or mild soap.

DUST REMOVAL: Dust build-up is simply airborne particles of dust collecting on the finish. If not properly removed, this build-up may dull or even scratch the finish. Simply wipe the finish with a cloth dampened with a mild detergent or polish.

SPILLS: Your finish is resistant to most household spills. If a spill should occur, it should be wiped up immediately to avoid any potential damage.

EXCESSIVE EXPOSURE: Heat, high humidity, direct sunlight or liquids can damage both the finish and the wood. Take care to avoid these conditions.

OUR WARRANTY

Cedar Ridge Furniture warrants its furniture products by providing a 10 year limited warranty to the original purchaser. Should any of our furniture products fail due to defects in material or workmanship under normal use within this period, Cedar Ridge Furniture will at its own discretion, repair or replace the defective part. This warranty is not transferable.

This warranty does not cover products which are misused, abused, mishandled, improperly installed, improperly stored, changed, modified, or are subject to extreme temperatures or extreme moisture levels. This warranty is not valid for products used for any purpose other than the purpose for which they were originally intended.

This warranty does not cover the cost of installation, removal,

subsequent damage, or transportation of the defective product regardless of whether work was performed by a contractor, service company or yourself.

Variations in color and grain patterns are a natural characteristic of wood. Color changes may occur as a result of aging, exposure to light heat, and other natural and chemical elements. Color variations and changes are not covered by this warranty.

To submit a claim under this warranty, contact the nearest Cedar Ridge furniture dealer, or send a letter explaining the defect, with a dated sales receipt as proof of purchase to:

Attn: Claims Department

Cedar Ridge Furniture, 112 Maxwell Hill Rd. Morgantown, PA 19543

CHEST KEY

WOOD TYPE KEY

11 = Cedar
 22 = Oak
 33 = Cherry
 44 = Maple
 55 = Qtr Sawn
 White Oak
 66 = Tiger Maple
 88 = Hickory

SYMBOLS KEY

S = Standard
 O = Optional
 N/A = Not Available

	Description	Wood Species	Item #	Overall Dimensions W X D X H	Cu. Feet	Casters	Lock	Spring Lid Support	Dovetail Joints	Cedar Lining
BASIC	Mini	Cedar	10-11	24 x 13.5 x 14.5	1.4	N/A	O	N/A	O	N/A
	Small	Cedar	20-11	30 x 15.5 x 16.5	2.8	N/A	O	N/A	O	N/A
	QUICK SHIP Medium	Cedar	30-11	36 x 17.5 x 18.5	5.1	N/A	O	N/A	O	N/A
	Large	Cedar	40-11	42 x 18.5 x 19.5	6.7	N/A	O	N/A	O	N/A
FRANKLIN	Small	Cedar	33-11	36 x 17.5 x 17.5	3.6	O	S	N/A	O	N/A
	Medium	Cedar	44-11	42 x 18.5 x 19	4.9	O	S	N/A	O	N/A
	Large	Cedar	55-11	46 x 20 x 20.5	6.9	O	S	N/A	O	N/A
CHARLESTON	Medium	Oak	44-22	42 x 18.5 x 19	4.9	O	S	S	O	O
	Large	Oak	55-22	46 x 20 x 20.5	6.9	O	S	S	O	O
	Medium	Cherry	44-33	42 x 18.5 x 19	4.9	O	S	S	O	O
	Large	Cherry	55-33	46 x 20 x 20.5	6.9	O	S	S	O	O
SUMMERFIELD	Petite	Cedar	27-11	29 x 16.5 x 17	2.2	N/A	S	N/A	O	N/A
	Small	Cedar	37-11	36 x 17.5 x 18	3.3	O	S	N/A	O	N/A
	Medium	Cedar	72-11	42 x 18.5 x 19.5	4.5	O	S	N/A	O	N/A
	QUICK SHIP Large	Cedar	77-11	46 x 20 x 21.5	6.4	O	S	N/A	O	N/A
	Jumbo	Cedar	97-11	46 x 24.5 x 25.5	10.2	O	S	N/A	O	N/A
HARMONY	Small	Oak	37-22	36 x 17.5 x 18	3.3	O	S	S	O	O
	Medium	Oak	72-22	42 x 18.5 x 19	4.5	O	S	S	O	O
	Large	Oak	77-22	46 x 20 x 21.5	6.4	O	S	S	O	O
	Jumbo	Oak	97-22	46 x 24.5 x 25.5	10.2	O	S	S	O	O
	Small	Cherry	37-33	36 x 17.5 x 18	3.3	O	S	S	O	O
	Medium	Cherry	72-33	42 x 18.5 x 19	4.5	O	S	S	O	O
	Large	Cherry	77-33	46 x 20 x 21.5	6.4	O	S	S	O	O
	Jumbo	Cherry	97-33	46 x 24.5 x 25.5	10.2	O	S	S	O	O
	Small	Maple	37-44	36 x 17.5 x 18	3.3	O	S	S	O	O
	Medium	Maple	72-44	42 x 18.5 x 19	4.5	O	S	S	O	O
	Large	Maple	77-44	46 x 20 x 21.5	6.4	O	S	S	O	O
	STEAMER TRUNK	Jumbo	Maple	97-44	46 x 24.5 x 25.5	10.2	O	S	S	O
		Oak	100-22	36 x 20 x 18	4.9	N/A	S	N/A	N/A	N/A
QUICK SHIP		Maple	100-44	36 x 20 x 18	4.9	N/A	S	N/A	N/A	N/A
		Hickory	100-88	36 x 20 x 18	4.9	N/A	S	N/A	N/A	N/A
Tall		Oak	124-22	36 x 20 x 24	7.2	N/A	S	N/A	N/A	N/A
Tall		Maple	124-44	36 x 20 x 24	7.2	N/A	S	N/A	N/A	N/A
Tall		Hickory	124-88	36 x 20 x 24	7.2	N/A	S	N/A	N/A	N/A
PLYMOUTH TRUNK		Oak	200-22	36 x 20 x 18	4.9	N/A	S	N/A	N/A	N/A
		Maple	200-44	36 x 20 x 18	4.9	N/A	S	N/A	N/A	N/A
		Hickory	200-88	36 x 20 x 18	4.9	N/A	S	N/A	N/A	N/A
	Tall	Oak	300-22	36 x 20 x 24	7.2	N/A	S	N/A	N/A	N/A
	Tall	Maple	300-44	36 x 20 x 24	7.2	N/A	S	N/A	N/A	N/A
	Tall	Hickory	300-88	36 x 20 x 24	7.2	N/A	S	N/A	N/A	N/A



We have five select chests in our Quick ship program that are available to be shipped within 3 Business days after receipt of order.

CHEST KEY

	Description	Wood Species	Item #	Overall Dimensions W X D X H	Cu. Feet	Casters	Lock	Spring Lid Support	Dovetail Joints	Cedar Lining
MANCHESTER		Cedar	56-11	46 x 20 x 24.5	6.8	0	S	N/A	0	N/A
		Oak	56-22	46 x 20 x 24.5	6.8	N/A	S	S	0	0
		Cherry	56-33	46 x 20 x 24.5	6.8	N/A	S	S	0	0
SPRING FIELD	Medium	Cedar	4407-11	42 x 18.5 x 22	4.9	0	S	N/A	0	N/A
	Large	Cedar	5507-11	46 x 20 x 24.5	6.8	0	S	N/A	0	N/A
CAMBRIDGE	Medium	Oak	4407-22	42 x 18.5 x 22	4.9	N/A	S	S	0	0
	Large	Oak	5507-22	46 x 20 x 24.5	6.8	N/A	S	S	0	0
	Medium	Cherry	4407-33	42 x 18.5 x 22	4.9	N/A	S	S	0	0
	Large	Cherry	5507-33	46 x 20 x 24.5	6.8	N/A	S	S	0	0
CARRIAGE HOUSE	Tulip Foot	Oak	701-22	36.5 x 17.75 x 23.5	3.4	N/A	S	S	S	N/A
	Shaker Base	Oak	702-22	36.5 x 17.75 x 23.5	3.4	N/A	S	S	S	N/A
	Tulip Foot	Cherry	701-33	36.5 x 17.75 x 23.5	3.4	N/A	S	S	S	N/A
	Shaker Base	Cherry	702-33	36.5 x 17.75 x 23.5	3.4	N/A	S	S	S	N/A
	Tulip Foot	Maple	701-44	36.5 x 17.75 x 23.5	3.4	N/A	S	S	S	N/A
	Shaker Base	Maple	702-44	36.5 x 17.75 x 23.5	3.4	N/A	S	S	S	N/A
	Shaker Base	Tiger Maple	702-66	36.5 x 17.75 x 23.5	3.4	N/A	S	S	S	N/A
	Shaker Base	Qtr. Sawn Oak	702-55	36.5 x 17.75 x 23.5	3.4	N/A	S	S	S	N/A
SAVANNAH	Tulip Foot	Oak	601-22	36.5 x 17.75 x 23.5	4.9	N/A	S	S	S	N/A
	Shaker Base	Oak	602-22	36.5 x 17.75 x 23.5	4.9	N/A	S	S	S	N/A
	Tulip Foot	Cherry	601-33	36.5 x 17.75 x 23.5	4.9	N/A	S	S	S	N/A
	Shaker Base	Cherry	602-33	36.5 x 17.75 x 23.5	4.9	N/A	S	S	S	N/A
	Tulip Foot	Maple	601-44	36.5 x 17.75 x 23.5	4.9	N/A	S	S	S	N/A
	Shaker Base	Maple	602-44	36.5 x 17.75 x 23.5	4.9	N/A	S	S	S	N/A
	Shaker Base	Tiger Maple	602-66	36.5 x 17.75 x 23.5	4.9	N/A	S	S	S	N/A
	Shaker Base	Qtr. Sawn Oak	602-55	36.5 x 17.75 x 23.5	4.9	N/A	S	S	S	N/A
YORKTOWN	Medium	Oak	4400-22	42.5 x 19 x 19	4.9	N/A	S	S	0	0
	Large	Oak	5500-22	46.5 x 20.5 x 21	6.8	N/A	S	S	0	0
	Medium	Cherry	4400-33	42.5 x 19 x 19	4.9	N/A	S	S	0	0
	Large	Cherry	5500-33	46.5 x 20.5 x 21	6.8	N/A	S	S	0	0
MIS-SION		Oak	3718-22	42.5 x 19.25 x 19	4.8	N/A	0	S	N/A	N/A
		Qtr Sawn Oak	3718-55	42.5 x 19.25 x 19	4.8	N/A	0	S	N/A	N/A
MAYFLOWER	Medium	Oak	423-22	42.5 x 18.5 x 21.5	5.8	N/A	S	S	N/A	0
	Large	Oak	523-22	46.5 x 20.5 x 22.5	7.3	N/A	S	S	N/A	0
	Medium	Cherry	423-33	42.5 x 18.5 x 21.5	5.8	N/A	S	S	N/A	0
	Large	Cherry	523-33	46.5 x 20.5 x 22.5	7.3	N/A	S	S	N/A	0
SHAKER 3 Panel	3 Panel	Oak	4219-22	42.5 x 19.25 x 19	5	N/A	0	S	N/A	N/A
	3 Panel	Cherry	4219-33	42.5 x 19.25 x 19	5	N/A	0	S	N/A	N/A
	QUICK SHIP 3 Panel	Maple	4219-44	42.5 x 19.25 x 19	5	N/A	0	S	N/A	N/A
SHAKER 2 Panel	2 Panel	Oak	3316-22	33 x 16.5 x 18	2.8	N/A	0	S	N/A	N/A
	2 Panel	Cherry	3316-33	33 x 16.5 x 18	2.8	N/A	0	S	N/A	N/A
	2 Panel	Maple	3316-44	33 x 16.5 x 18	2.8	N/A	0	S	N/A	N/A
Toy Chest		Maple	411-44	36.5 x 17.75 x 17.75	4.2	N/A	N/A	S	0	N/A
		Oak	411-22	36.5 x 17.75 x 17.75	4.2	N/A	N/A	S	0	N/A
	Engraved	Oak	421-22	42.5 x 18.75 x 18.75	5.2	N/A	N/A	S	0	N/A
	Plain	Oak	424-22	42.5 x 18.75 x 18.75	5.2	N/A	N/A	S	0	N/A



Lux Wood
Home Accents

Steamer Trunks • Cedar Chests • Toy Chests

DEALER INFORMATION