

The  
**HERITAGE**  
Series

Home Office Furniture



Enjoy  
our  
Heritage  
in your office

# Welcome



The Heritage Series furniture is handcrafted in the U.S.A. from majestic, solid hardwoods; is incredibly durable, and resists the scars and scratches that quickly deface veneer furniture. The Heritage Series furniture will last a lifetime!

Made from oak, cherry, maple, quarter-sawn white oak, and walnut wood species, this furniture offers you a breath of nature, skillfully crafted into a legacy of quality.

Choose your style for today—your heirloom for tomorrow!



## Guarantee

The Heritage Series is backed by a full, one-year guarantee from the date of purchase. If you are not satisfied with your purchase, return the product to the place of purchase, and we will repair or replace it.

Since our product is made of solid wood, it will naturally expand and contract with normal changes in humidity. If a panel splits from normal humidity changes or the finish cracks or blisters, we will replace or repair it at no cost to you up to five years from the date of purchase.

To claim our guarantee, simply return your product to the place of purchase. Shipping and handling charges may apply.

# Table of Contents



Order Guide . . . . . 4

Standard Features . . . . . 4

Styles . . . . . 5-11

Desks and Hutches . . . . . 12-15

Corner Desks and Hutches . . . 16-17

Filing Cabinets . . . . . 18

Bookcases . . . . . 19-21

Computer Armoire . . . . . 22

Secretary Desks . . . . . 22

Le Chateau . . . . . 23-26

Queen Anne Secretary Desks . . . 27



# Standard Features

- Solid wood construction
- 100 lb. full extension drawer slides
- Dovetailed drawers
- High quality finishes
- Pullout writing trays
- Flip-down kneehole drawer
- Details and choices
- Guaranteed satisfaction
- 1-1/2" Grommet in all desk tops



**Full Extension Drawers**  
Easy access to your files. Drawers are dovetailed for durability.



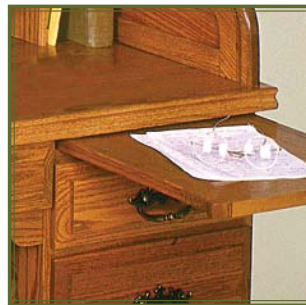
**Dovetail Pigeon Holes**  
Dovetail pigeon holes add pleasing detail and strengthen the construction.



**Kneehole Drawer**  
Drawer works as both a pencil drawer and a flip-down keyboard drawer.



**Mortise & Tenon Joint**  
Mortise and tenon joints reinforced with screws will last for generations.



**Pullout Writing Tray**  
Pullout writing tray gives you more room to do your work.



**Long Lasting Cable**  
No canvas to wear out or get brittle. Cable with tongue and groove construction is guaranteed for life.

## Order Guide

### 1. Select Style:

- Traditional Flat Sides
- Traditional Panel Sides
- Mission Flat Sides
- Mission Panel Sides
- Shaker Flat Sides
- Contemporary Panel Sides
- Le Chateau
- Queen Anne

### 2. Select Wood:

- Red Oak
- Maple
- Cherry
- Walnut
- Q.S. White Oak

### 3. Select Finish:

See separate finish options brochure.

### 4. Select Hardware:

See options on style pages 5-11.

### 5. Select Base Desk

### 6. Optional: Select Roll Top

Must match width and depth of base.

### 7. Optional: Select Hutch and Hutch Door Styles

Must match width of base.

See door options on style pages 5-11.

# Styles

All desk configurations are available in these six styles. Actual sizes vary slightly from style to style. Le Chateau (p. 23) and Queen Anne (p. 27) have unique sizes.



## Traditional Flat Sides page 9

- Traditional classic profiles
- Flat solid wood sides (select veneers on backs)
- 1-1/4" thick top edges
- Raised drawer fronts
- Cutouts on baseboard
- Dental and crown moulding on hutches



## Traditional Panel Sides page 8

- Traditional classic profiles
- Style and rail with raised panel sides (desks and roll tops have raised back)
- 1-1/4" thick top edges
- Raised drawer fronts
- Cutouts on baseboard
- Dental and crown moulding on hutches



## Shaker Flat Sides page 6

- Flat solid wood sides (select veneers on backs)
- 1-1/4" thick top edges
- Shaker drawer fronts
- Shaker cut at base
- Shaker crown moulding on hutches



## Mission Flat Sides page 10

- Flat solid wood sides (select veneers on backs)
- 1-1/4" thick top edges
- Mission drawer fronts
- Mission cut at base
- Mission crown moulding on hutches



## Mission Panel Sides page 11

- Style and rail with inset panel sides (desks and roll tops have inset panel back)
- 1-1/4" thick top edges
- Mission drawer fronts
- Mission cut at base
- Mission crown moulding on hutches



## Contemporary Panel Sides page 7

- Style and rail with panel sides (select veneers on backs)
- 3/4" thick floating top
- Inset drawer fronts
- Square tapered legs at base
- 3/4" thick floating top on hutches

Optional Distressed Finishes



## Hutch and Bookcase Options

1. Glass shelves
2. Touch switch lights
3. Solid wood, tongue and groove back

## Glass Options

1. Regular (standard)
2. Beveled
3. Seedy
4. Glue Chip





Shaker



10SG  
Shaker Door  
with Glass



10SP  
Shaker  
Wooden Door



10CG  
Contemporary  
Door with Glass



10CP  
Contemporary  
Wooden Door

Shaker and Contemporary  
Doors and Hardware



521-SN



N118-2  
Cherry-Oak-Walnut



\*\*519-2  
-SN -AE-BN-AC



\*400-SN



\*\*489-2  
-SN -BL-ORB



521-BL



\*\*115-2  
-AC -SN-BN-AE



\*\*519-AC



\*\*420-PWT



\*\*\*281-2  
-ORB -SN

Contemporary



\* Group 1 hardware  
\*\* Group 2 hardware  
\*\*\* Group 3 hardware  
Upcharge may apply

# Traditional Panel Sides



## Traditional Doors and Hardware



10TG  
Square Glass



10TP  
Raised Panel



20TG  
Standard Glass



20TGM  
Mullion Glass



152-AE



\*644-AE



\*BW9-2  
-Oak -Cherry  
-Walnut -Maple



\*K235-2  
-BB -SN-ORB



5261-2 -SN -BL-SI-ORB



K200-LP



\*981-2  
-SN -BL-AB-ORB



\*\*\*582-2  
-ORB -SN-WID-BL



590-2  
-ORB -SN-SI-BL



\*\*\*323-2 -BL -WN-ORB



580-2  
-SI -BL-AB-ORB



\*\*130-2  
-WN -BL-ORB



## Traditional Flat Sides



\* Group 1 hardware  
\*\* Group 2 hardware  
\*\*\* Group 3 hardware  
Upcharge may apply

# Mission Flat Sides

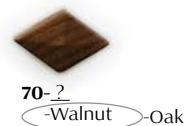
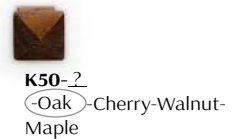


**10MG**  
Mission Door  
with Glass



**10MP**  
Mission  
Wooden door

## Mission Doors and Hardware



# Mission Panel Sides



\* Group 1 hardware  
\*\* Group 2 hardware  
\*\*\* Group 3 hardware  
Upcharge may apply

# Desks & Tables



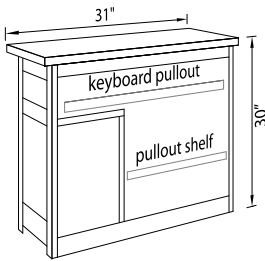
3120K4  
Traditional Flat Sides in Oak



40D1  
Traditional Flat Sides in Oak



3124D8  
Traditional Flat Sides in Oak



## Computer Stands 31" Wide

3120K4 30"h x 31"w x 20"d  
3124K4 30"h x 31"w x 24"d

## 31" Wide with Doors

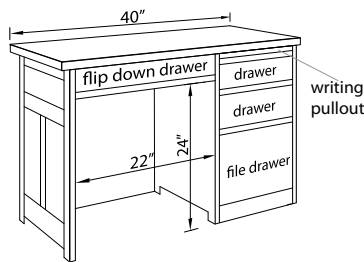
3120K4D 30"h x 31"w x 20"d  
3124K4D 30"h x 31"w x 24"d

## Computer Stands 40" Wide

4020K4 30"h x 40"w x 20"d  
4024K4 30"h x 40"w x 24"d

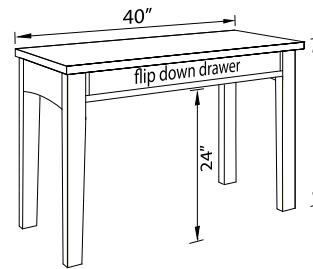
## 40" Wide with Doors

4020K4D 30"h x 40"w x 20"d  
4024K4D 30"h x 40"w x 24"d



## Writing Desk 40" Wide

40D1 30"h x 40"w x 27"d

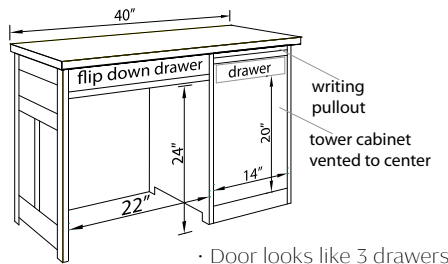


## Table Desks 31" Wide

3120D8 30"h x 31"w x 20"d  
3124D8 30"h x 31"w x 24"d

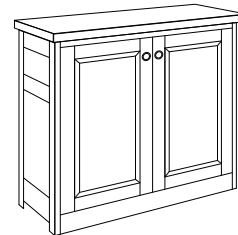
## Table Desks 40" Wide

4024D8 30"h x 40"w x 24"d  
40D8 30"h x 40"w x 27"d



## Computer Desk 40" Wide

40D3 30"h x 40"w x 27"d



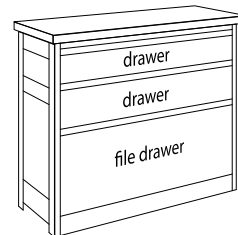
1 Adjustable shelf inside

## Credenza Bases 31" Wide

31K1 30"h x 31"w x 20"d  
3124K1 30"h x 31"w x 24"d

## Credenza Bases 40" Wide

40K1 30"h x 40"w x 20"d  
4024K1 30"h x 40"w x 24"d



## Drawer Cabinets 31" Wide

3120D1 30"h x 31"w x 20"d  
3124D1 30"h x 31"w x 24"d

# Laptop Stands



## Laptop Stands with Drawer

23L2 28"h x 23"w x 17"d  
27L2 28"h x 27"w x 17"d



## Laptop Stands

23L1 28"h x 23"w x 17"d  
27L1 28"h x 27"w x 17"d

# Roll Tops

# Hutches



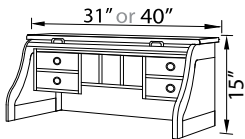
40D1 & 40R5  
Traditional Flat Sides in Oak



4024D8 & 40H9  
Mission Flat Sides in Oak



40D1 & 40R1 & 40H3  
Traditional Flat Sides in Oak



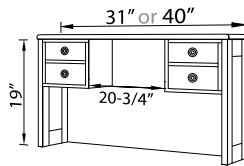
Automatic light

**Roll Top 31" Wide**

31R1 15"h x 31"w x 24"d

**Roll Top 40" Wide**

4024R1 15"h x 40"w x 24"d

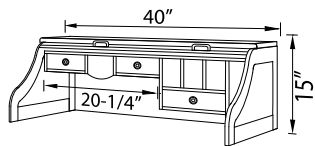


**Open Top 31" Wide**

31H9 19"h x 31"w x 12"d

**Open Top 40" Wide**

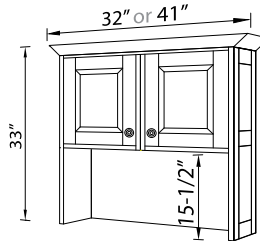
40H9 19"h x 40"w x 12"d



Automatic light and receptacle

**Roll Top 40" Wide x 27" Deep**

40R5 15"h x 40"w x 27"d

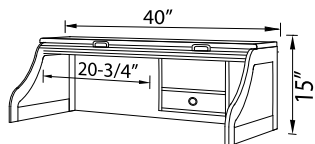


**Hutch 31" Wide**

31H1 33"h x 31"w x 14"d

**Hutch 40" Wide**

40H1 33"h x 40"w x 14"d



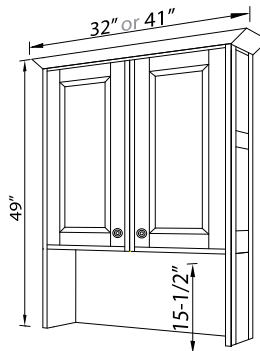
**40" Wide x 27" Deep**

40R1 15"h x 40"w x 27"d



**Optional Removable Roll Top Insert**

20N9 20-3/4" wide  
Fits R1 & R3

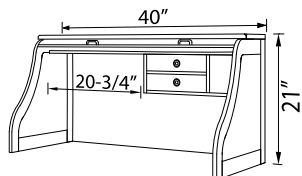


**Hutch 31" Wide\***

31H4 49"h x 31"w x 14"d

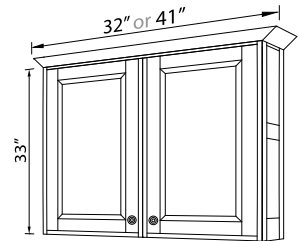
**Hutch 40" Wide\***

31H4 49"h x 40"w x 14"d



**Roll Top 40" Wide x 27" Deep**

40R3 21"h x 40"w x 27"d

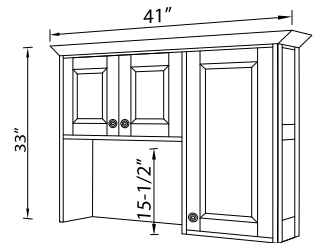


**Hutch 31" Wide\***

31H5 33"h x 31"w x 14"d

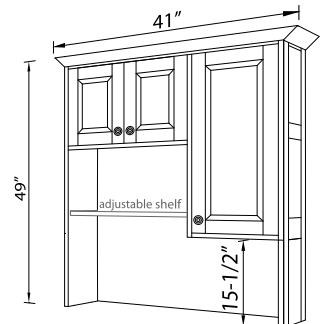
**Hutch 40" Wide\***

40H5 33"h x 40"w x 14"d



**Hutch 40" Wide\***

40H3 33"h x 40"w x 14"d



**Hutch 40" Wide\***

40H2 49"h x 40"w x 14"d

\*2 Adjustable shelves inside

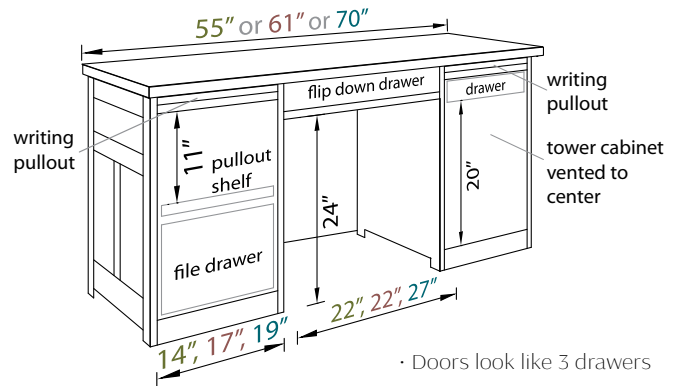
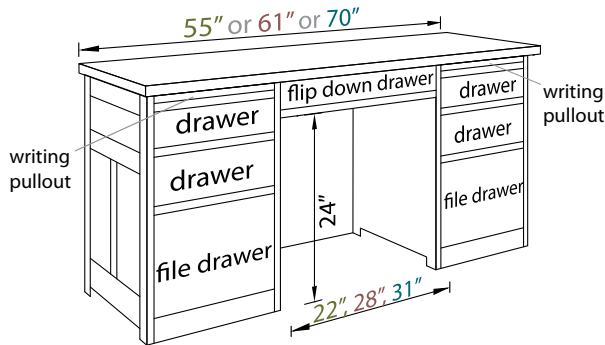
# Writing & Computer Desks



61D1  
Traditional Panel Sides in Cherry



55D3  
Mission Flat Sides in Oak



## Writing Desks 27" Deep

- 55D1 30"h x 55"w x 27"d
- 61D1 30"h x 61"w x 27"d
- 70D1 30"h x 70"w x 27"d

## Writing Desks 30" Deep

- 6130D1 30"h x 61"w x 30"d
- 7030D1 30"h x 70"w x 30"d

## Writing Desks 33" Deep

- 6133D1 30"h x 61"w x 33"d
- 7033D1 30"h x 70"w x 33"d

## Computer Desks 27" Deep

- 55D3 30"h x 55"w x 27"d
- 61D3 30"h x 61"w x 27"d
- 70D3 30"h x 70"w x 27"d

## Computer Desks 30" Deep

- 6130D3 30"h x 61"w x 30"d
- 7030D3 30"h x 70"w x 30"d

## Computer Desks 33" Deep

- 6133D3 30"h x 61"w x 33"d
- 7033D3 30"h x 70"w x 33"d



## Optional Power Switch

**PS1** Heavy duty power supply with 1110 joule surge protection with 3 switched receptacles, 3 constant power receptacles, phone, fax and high speed data ports and 2 sets of USB ports.



70D1 & 70BF  
Traditional Panel Sides in Cherry

## Bow Front Upgrade for 27" Deep Desks

- 10" Top overhang, baseboard on all sides
- 55BF Top 55"w x 36"d
- 61BF Top 61"w x 36"d
- 70BF Top 70"w x 36"d

# Roll Tops



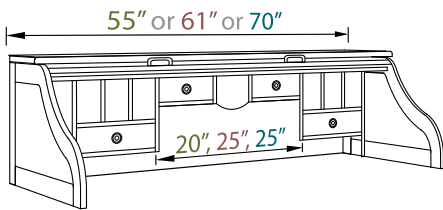
55D1 & 55R5  
Traditional Panel Sides in Oak



Receptacle and light that automatically lights when roll top is opened.



55D3 & 55R3  
Traditional Flat Sides in Oak



Automatic light and receptacle

## Roll Tops 27" Deep

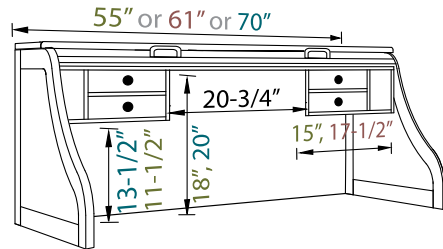
55R5 15"h x 55"w x 27"d

61R5 15"h x 61"w x 27"d

## Roll Tops 30" Deep

6130R5 17"h x 61"w x 30"d

7030R5 17"h x 70"w x 30"d



## Roll Tops 27" Deep

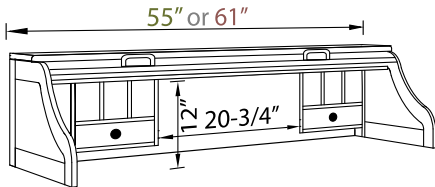
55R3 21"h x 55"w x 27"d

61R3 21"h x 61"w x 27"d

## Roll Tops 30" Deep

6130R3 23"h x 61"w x 30"d

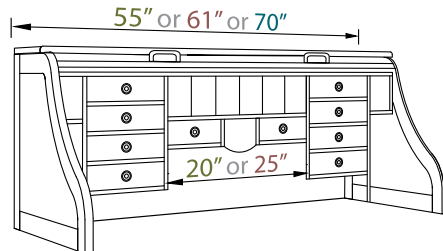
7030R3 23"h x 70"w x 30"d



## Roll Tops 27" Deep

55R1 15"h x 55"w x 27"d

61R1 15"h x 61"w x 27"d



Automatic light and receptacle

## Roll Tops 27" Deep

55R7 21"h x 55"w x 27"d

61R7 21"h x 61"w x 27"d

## Roll Tops 30" Deep

6130R7 23"h x 61"w x 30"d

7030R7 23"h x 70"w x 30"d



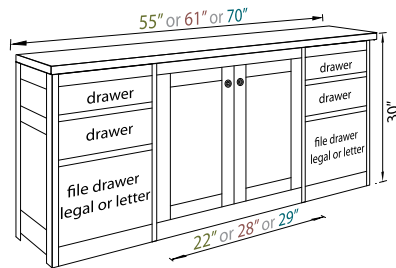
## Optional Removable Roll Top Insert

20N9 20-3/4" wide  
Fits R1 & R3

# Credenza Bases



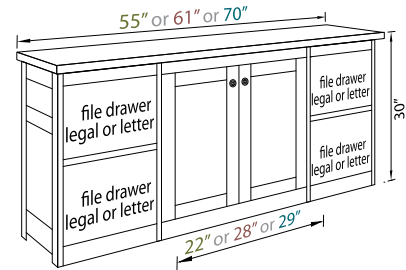
61K2  
Traditional Flat Sides in Oak



1 Adjustable shelf inside

### Credenza Bases

- 55K1 30\"/>

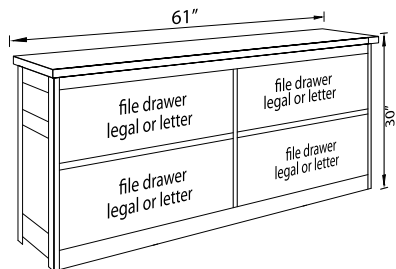


1 Adjustable shelf inside

### Credenza Bases

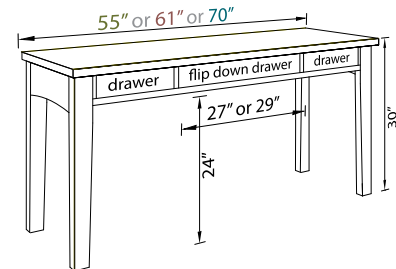
- 55K2 30\"/>

# File Cabinet & Table Bases



### File Cabinet Base

- 61F2 30\"/>



### Table Bases

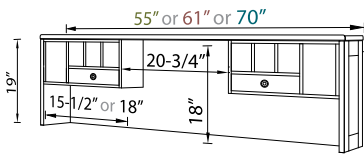
- 55D8 30\"/>



# Hutches



61D1 & 61H9  
Traditional Flat Sides in Oak

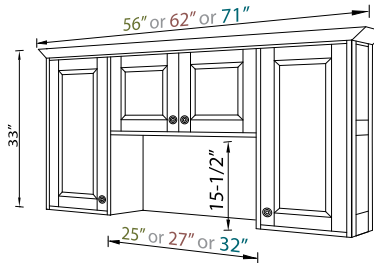


## Open Tops for Desks or Credenzas

- 55H9 19"h x 55"w x 12"d
- 61H9 19"h x 61"w x 12"d
- 70H9 19"h x 70"w x 12"d



6130D1 & 6130R7 & 61H3  
Traditional Panel Sides in Cherry

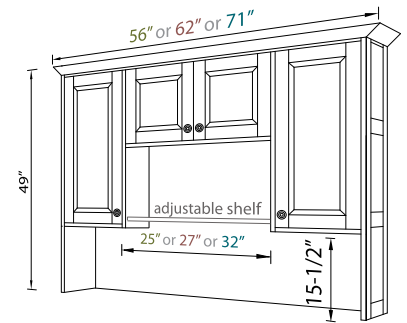


## Hutches for Roll Tops\*

- 55H3 33"h x 55"w x 14"d
- 61H3 33"h x 61"w x 14"d
- 70H3 33"h x 70"w x 14"d

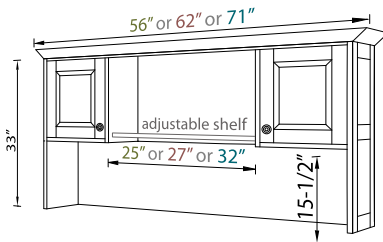


6130D1 & 61H2  
Shaker in Cherry



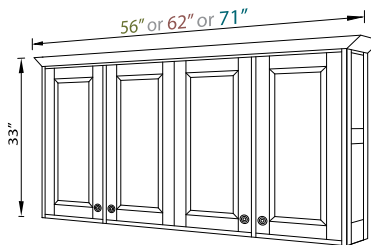
## Hutches for Desks or Credenzas\*

- 55H2 49"h x 55"w x 14"d
- 61H2 49"h x 61"w x 14"d
- 70H2 49"h x 70"w x 14"d



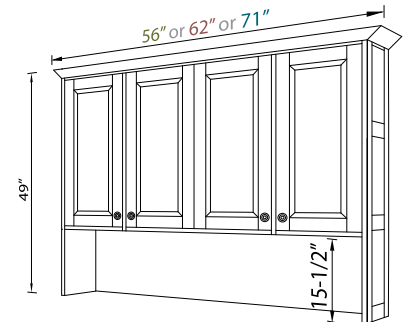
## Hutches for Flat Tops, Roll Tops or Credenzas

- 55H1 33"h x 55"w x 14"d
- 61H1 33"h x 61"w x 14"d
- 70H1 33"h x 70"w x 14"d



## Hutches for Roll Tops\*

- 55H5 33"h x 55"w x 14"d
- 61H5 33"h x 61"w x 14"d
- 70H5 33"h x 70"w x 14"d



## Hutches for Desks or Credenzas\*

- 55H4 49"h x 55"w x 14"d
- 61H4 49"h x 61"w x 14"d
- 70H4 49"h x 70"w x 14"d



### Optional CD Insert

6N9 14"h x 6-1/4"w x 7"d



### Optional 2-Drawer Hutch Top Insert

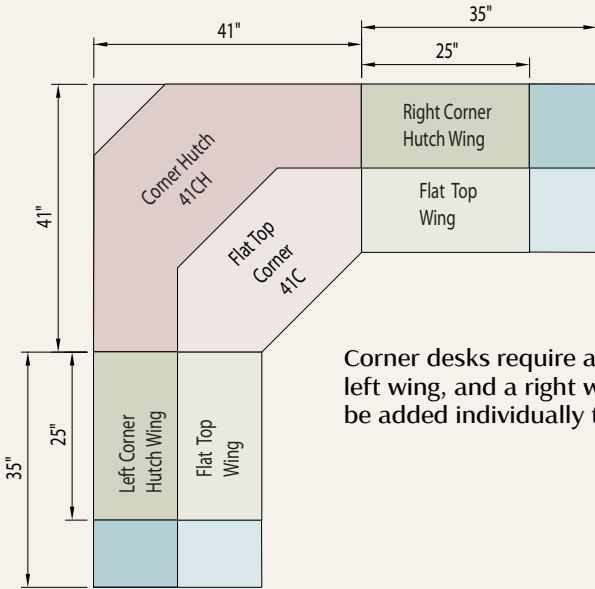
11N9 15-1/4"h x 11"w x 9-3/4"d

\*2 Adjustable shelves inside

# Corner Desks



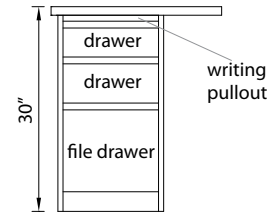
41C in Center, 25W1 on Left & 35W5 on Right  
Traditional Flat Sides in Oak



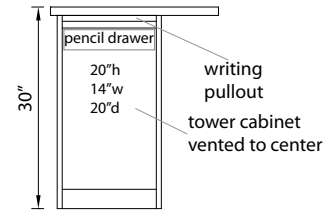
Corner desks require a center base, a left wing, and a right wing. Hutches may be added individually to each section.

## 25" Corner Wings

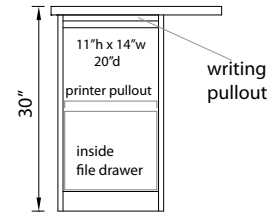
Order Left or Right



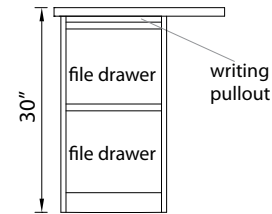
25W1 30"h x 25"w x 25"d



25W2 30"h x 25"w x 25"d  
· Door looks like 3 drawers



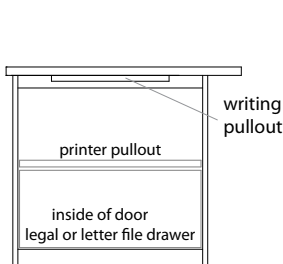
25W3 30"h x 25"w x 25"d  
· Door looks like 3 drawers



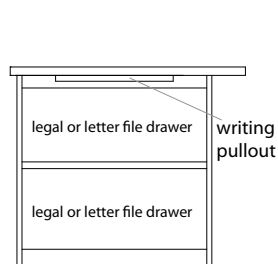
25W4 30"h x 25"w x 25"d  
Top drawer will look like two drawers.

## 35" Corner Wings

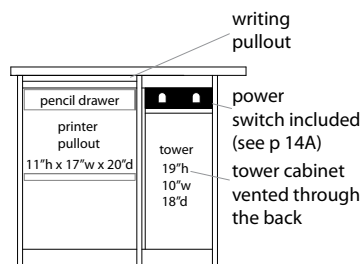
Order Left or Right



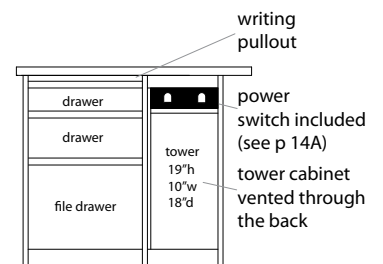
35W3 30"h x 35"w x 25"d  
· Door looks like 3 drawers



35W4 30"h x 35"w x 25"d

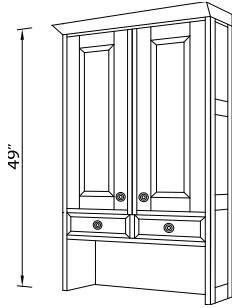


35W5 30"h x 35"w x 25"d  
· Door looks like 3 drawers

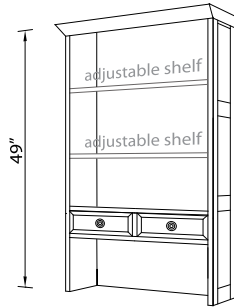


35W6 30"h x 35"w x 25"d

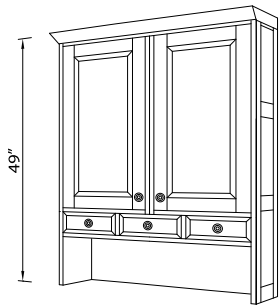
Hutch Wings  
Order Left or Right



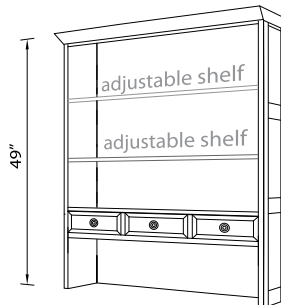
**25WH4** 49"h x 25"w x 14"d  
Adjustable shelves inside



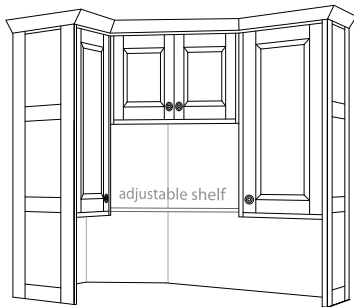
**25WH6** 49"h x 25"w x 14"d



**35WH4** 49"h x 35"w x 14"d  
Adjustable shelves inside



**35WH6** 49"h x 35"w x 14"d



**41CH2** 49"h x 41"w x 41"d  
Adjustable shelves inside

# Corner Desk Hutches



Base: 41C in Center, 25W3 on Left & 25W1 on Right  
Hutches: 41CH2 in Center, 25WH4 on Left & None on Right  
Traditional Flat Sides in Oak



Base: 41C in Center, 35W3 on Left & 25W2 on Right  
Hutches: 41CH2 in Center  
Traditional Flat Sides in Oak

# Filing Cabinets



31F2  
Traditional Flat Sides in Cherry

### Lateral Filing Cabinets

- 31F2 30"h x 31"w x 20"d – Two drawer
- 31F3 41"h x 31"w x 20"d – Three drawer
- 31F4 53"h x 31"w x 20"d – Four drawer

### Anti-tip Feature

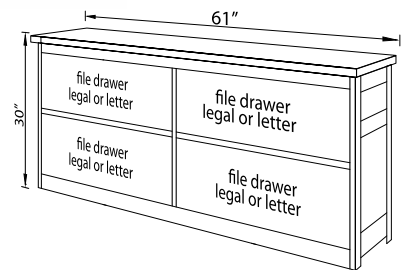
Standard on lateral filing cabinets.  
Allows only one drawer to be opened at a time.



31F3  
Traditional Flat Sides in Oak



31F4  
Traditional Panel Sides in Oak



61F2 30"h x 61"w x 20"d  
(See page 15 for hutches)



17F4

17F3

Traditional Flat Sides in Oak

17F2

### Filing Cabinets

- 17F2 30"h x 17-1/2"w x 27"d – Two drawer letter
- 20F2 30"h x 20-1/2"w x 27"d – Two drawer legal
- 17F3 46"h x 17-1/2"w x 27"d – Three & one half drawer letter
- 20F3 46"h x 20-1/2"w x 27"d – Three & one half drawer legal
- 17F4 53"h x 17-1/2"w x 27"d – Four drawer letter
- 20F4 53"h x 20-1/2"w x 27"d – Four drawer legal

# Barrister Book Cases



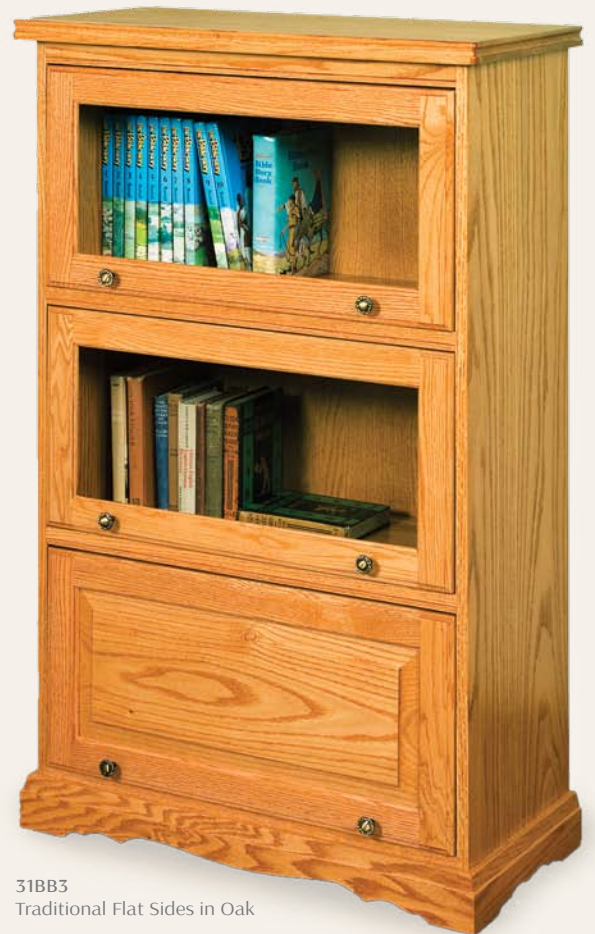
31F2 & 31 H4  
Traditional Flat Sides in Oak  
2 Adjustable shelves inside

**Hutch for Filing Cabinet**  
**31H4** 49"h x 31"w x 14"d



31F2 & 31 BH3  
Mission Panel Sides in Q.S.Oak

**Barrister Hutch for Filing Cabinet**  
**31BH3** 48"h x 31"w x 14"d



31BB3  
Traditional Flat Sides in Oak

**31BB3** 48"h x 31"w x 14"d – three doors high

**31BB4** 62"h x 31"w x 14"d – four doors high

**31BB5** 78"h x 31"w x 14"d – five doors high

**Choose Door Type:**

Glass or panel

Bottom door is panel unless noted differently

# Bookcases

**Choose Door Type:**  
Glass or panel  
Bottom door is panel unless noted differently

- 21" Wide Bookcases with Doors**  
 21B1D 30"h x 21"w x 14"d  
 21B2D 41"h x 21"w x 14"d  
 21B3D 53"h x 21"w x 14"d  
 21B4D 65"h x 21"w x 14"d  
 \*21B5D 78"h x 21"w x 14"d  
 \*21B5DD 78"h x 21"w x 14"d

- 32" Wide Bookcases with Doors**  
 32B1D 30"h x 32"w x 14"d  
 32B2D 41"h x 32"w x 14"d  
 32B3D 53"h x 32"w x 14"d  
 32B4D 65"h x 32"w x 14"d  
 \*32B5D 78"h x 32"w x 14"d  
 \*32B5DD 78"h x 32"w x 14"d

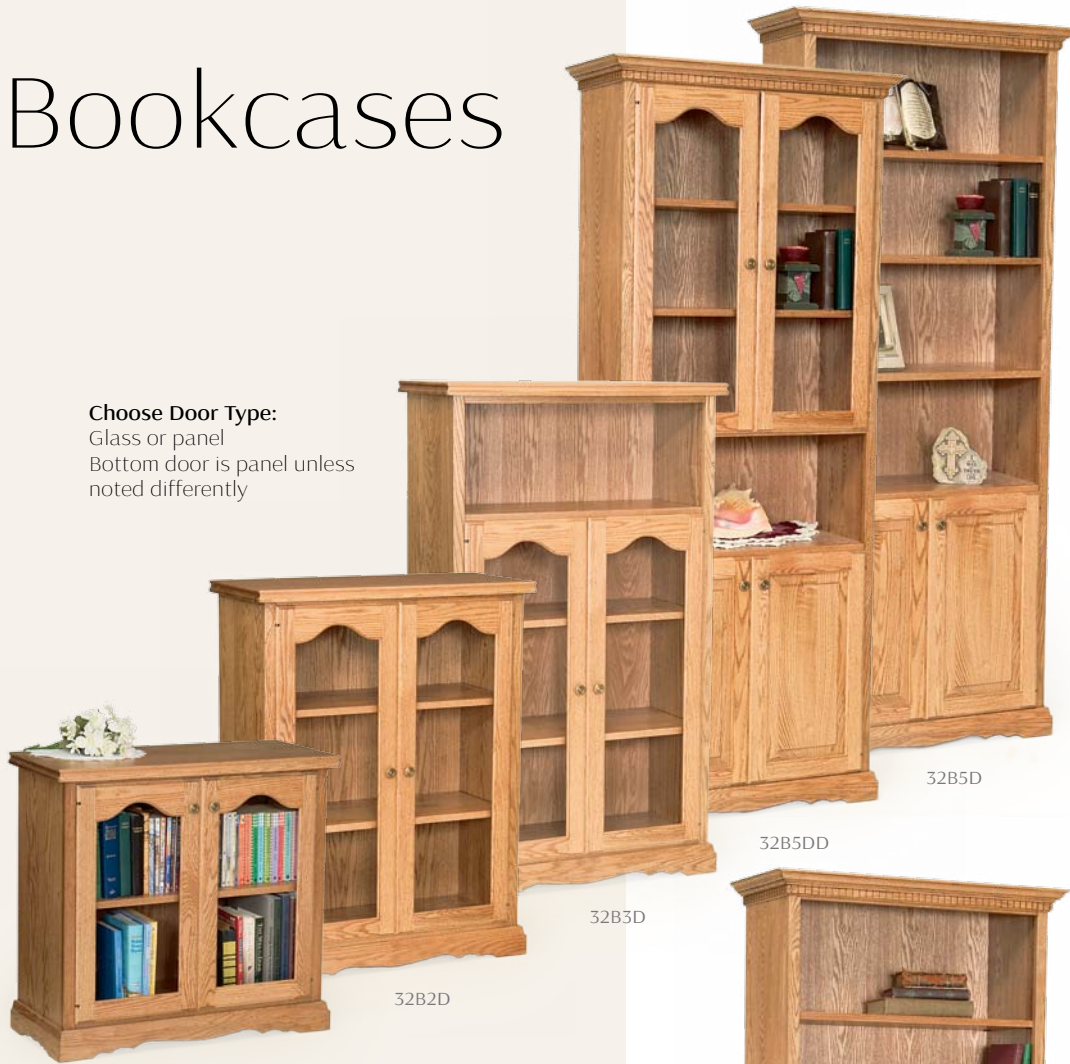
- 47" Wide Bookcases with Doors**  
 47B1D 30"h x 47"w x 14"d  
 47B2D 41"h x 47"w x 14"d  
 47B3D 53"h x 47"w x 14"d  
 47B4D 65"h x 47"w x 14"d  
 \*47B5D 78"h x 47"w x 14"d  
 \*47B5DD 78"h x 47"w x 14"d

\*Has crown instead of flat top

- 21" Wide Bookcases**  
 21B1 30"h x 21"w x 14"d  
 21B2 41"h x 21"w x 14"d  
 21B3 53"h x 21"w x 14"d  
 \*21B4 65"h x 21"w x 14"d  
 \*21B5 78"h x 21"w x 14"d

- 32" Wide Bookcases**  
 32B1 30"h x 32"w x 14"d  
 32B2 41"h x 32"w x 14"d  
 32B3 53"h x 32"w x 14"d  
 \*32B4 65"h x 32"w x 14"d  
 \*32B5 78"h x 32"w x 14"d

- 47" Wide Bookcases**  
 47B1 30"h x 47"w x 14"d  
 47B2 41"h x 47"w x 14"d  
 47B3 53"h x 47"w x 14"d  
 \*47B4 65"h x 47"w x 14"d  
 \*47B5 78"h x 47"w x 14"d



Traditional Panel – shown with optional tongue and groove back



# Wall Unit

## Bookcase Crown

31CR2 3-1/2" h x 41" w x 17" d

40CR2 3-1/2" h x 50" w x 17" d

55CR2 3-1/2" h x 65" w x 17" d

61CR2 3-1/2" h x 70" w x 17" d

70CR2 3-1/2" h x 80" w x 17" d



3120K4D in Center, 32B5D on Left & 32B5D on Right  
with 31CR2 for Crown  
Traditional Flat Sides in Oak

Configuration is up to YOUR imagination.

These units are custom fitted, and can be made to fit against a side wall upon request.

When ordering a wall unit choose:

1. **Center:** can be a regular desk, a credenza, or a computer center
2. **Left bookcase:** your choice
3. **Right bookcase:** your choice
4. **Crown:** optional

# Computer Armoire



481  
Traditional Flat Sides in Oak

## Computer Armoire Center

- 481 72 "h x 33"w x 22"d
- Folddown work station
  - One adjustable shelf in top
  - CD rack on door
  - Pullout printer shelf in bottom with removable file drawer
  - Pullout keyboard tray



540 & 41H7  
Traditional Flat Sides in Oak

Auto extend & retract support



542  
Traditional Flat Sides in Oak

- Secretary Desk**
- 540 Secretary desk with regular drawers  
43"h x 41"w x 21"d
  - 542 Secretary desk with file drawer  
(bottom file drawer looks like two drawers)  
43"h x 41"w x 21"d
  - 41H7 Hutch for secretary desk  
37"h x 41"w x 14"d



## *Le Chateau*



Concealed drawers  
behind mouldings

### **Le Chateau pages 23-27**

- Style and rail with inset panel sides
- 3/4" Thick tops with round corners
- Inset drawer fronts
- Wrapped moulding at base
- Wrapped crown moulding on hutches



*Le Chateau*



L55D1  
in Cherry

**Writing Desk**  
**L55D1** 30"h x 56"w x 27"d  
**L61D1** 30"h x 61"w x 30"d  
**L70D1** 30"h x 71"w x 30"d



Custom Corner Desk  
in Walnut



L55D3  
in Cherry

Writing tray slides  
inside top drawer

**Computer Desk**  
**L55D3** 30"h x 56"w x 27"d  
**L61D3** 30"h x 61"w x 30"d  
**L70D3** 30"h x 71"w x 30"d

**Bow Front Upgrade for 27" Deep Desks**  
(not shown) – see p. 14A  
10" Top overhang, baseboard on all sides  
**L55VT** x 56"w x 36"d  
**L61VT** x 61"w x 36"d  
**L70VT** x 71"w x 36"d



\*\*\*304-SN



\*\*\*\*875-ORB



\*\*613-DP



\*\*\*304-ORB



\*\*5219-2  
-ORB -SN-WID-MB



\*\*613-AC

\*\* Group 2 hardware  
\*\*\* Group 3 hardware  
\*\*\*\* Group 4 hardware  
Upcharge may apply

**Hutch for Flat Desk**

L55H2 51"h x 56"w x 14"d

L61H2 51"h x 61"w x 14"d

L70H2 51"h x 71"w x 14"d



L61D1 & L61H2  
in Cherry

**Hutch for Roll Top**

L55H3 31"h x 56"w x 14"d

L61H3 31"h x 61"w x 14"d

L70H3 31"h x 71"w x 14"d



L61H3  
in Cherry

**Open Hutch**

L55H9 23"h x 56"w x 14"d

L61H9 23"h x 61"w x 14"d

L70H9 23"h x 71"w x 14"d



L70D1 & L70H9  
in Walnut

**Roll Top with Light**

L55R5 20"h x 56"w x 27"d

L61R5 22"h x 61"w x 30"d

L70R5 22"h x 71"w x 30"d

**Computer Roll Top**

(not shown)

L55R3 26"h x 56"w x 27"d

L61R3 28"h x 61"w x 30"d

L70R3 28"h x 71"w x 30"d



L55D1 & L55R5  
in Cherry

## Le Chateau



L33B3  
in Cherry

### Le Chateau Bookcases 33" Wide

L33B1 35"h x 33"w x 15"d

L33B2 45"h x 33"w x 15"d

L33B3 58"h x 33"w x 15"d

\*L33B5 81"h x 33"w x 15"d

### 33" Wide with Doors

L33B1D 35"h x 33"w x 15"d

L33B2D 45"h x 33"w x 15"d

L33B3D 58"h x 33"w x 15"d

\*L33B5D 81"h x 33"w x 15"d

### Le Chateau Bookcases 49" Wide

L47B1 35"h x 49"w x 15"d

L47B2 45"h x 49"w x 15"d

L47B3 58"h x 49"w x 15"d

\*L47B5 81"h x 49"w x 15"d

### 49" Wide With Doors

L47B1D 35"h x 49"w x 15"d

L47B2D 45"h x 49"w x 15"d

L47B3D 58"h x 49"w x 15"d

\*L47B5D 81"h x 49"w x 15"d

\*Has no concealed drawer behind moulding



L20F2  
in Cherry

### Filing Cabinets

L20F2 35"h x 20"w x 27"d – Two drawer letter

L23F2 35"h x 23"w x 27"d – Two drawer legal

L20F3 46"h x 20"w x 27"d – Three drawer letter

L23F3 46"h x 23"w x 27"d – Three drawer legal

L20F4 58"h x 20"w x 27"d – Four drawer letter

L23F4 58"h x 23"w x 27"d – Four drawer legal

### Lateral Filing Cabinets

L33F2 35"h x 33"w x 21"d – Two drawer

L33F3 46"h x 33"w x 21"d – Three drawer

L33F4 58"h x 33"w x 21"d – Four drawer

### Anti-tip Feature

Standard on lateral filing cabinets.

Allows only one drawer to be opened at a time.



**Queen Anne Hutch for Secretary Desk**  
Q31H5 37"h x 33"w x 14"d

**Queen Anne Hutch for Flat Top Desk**  
(not shown)  
Q31H4 50"h x 33"w x 14"d



**Queen Anne Secretary Desk**  
Q31D3 43"h x 33"w x 21"d



**Queen Anne Hall Desk**  
Q31D1 30"h x 33"w x 21"d

*Queen Anne*

*Secretary*

*Desks*



Q31D3 & Q31H5  
in Cherry

# Embellish

your home office



# Experience

the beauty of hardwood office furniture

Made in USA



Version #12